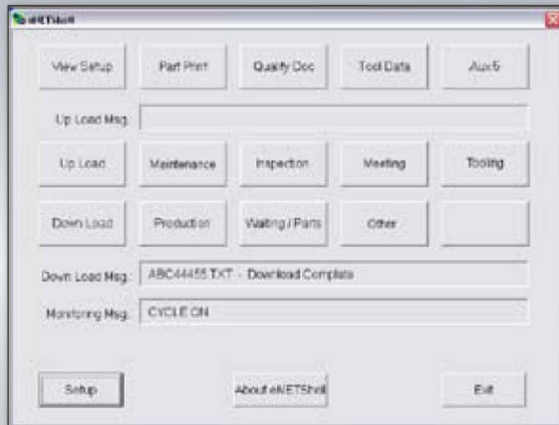


## Easy Shop Floor Access! **eNETDNC eNetShell**



With eNetDNC we would normally not recommend a PC on the shop floor but sometimes the need to have one is necessary, that's where eNetShell comes in. eNetShell works with eNetDNC to allow the machine operator to set the status of the CNC machine, see the current status of the CNC, and Send and Receive CNC

Programs to your CNC Machine. All the settings come straight from the main eNetDNC computer so as you make changes to your eNetDNC software they will update at the Computer running eNetShell.

Another feature of eNetShell is that you can launch default applications that are setup on our menu. Using file viewers, CAD viewers or other programs you can access Setup Sheets, Inspection Sheets, Prints or Documents that you would like Operators or Setup people to have access to.

Normal operation of eNetShell is done by having a touch screen monitor and computer by the CNC machine, this way the operator can easily select his current status, Download or Upload, View Documents just by touching the screen.

eNetShell can be added where needed but you can still have the flexibility to have some CNC's directly wired or wireless to eNetDNC. Talk with a eNetDNC representative today to find your best configuration of eNetDNC Options.



**eNETDNC**  
sales@portcnc.com

www.enetdnc.com | 414.817.7070

Machine Monitoring - Wireless DNC - Data Collection